

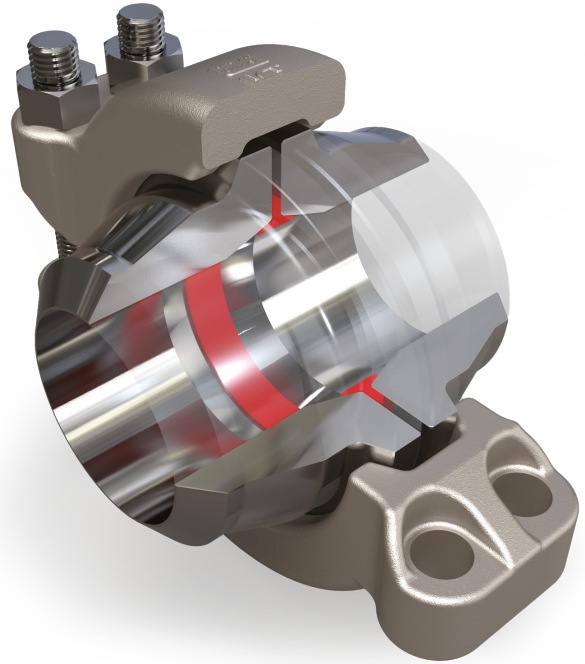
TPC Clamp Connector

TPC Clamp Connector

Easy to assemble

TP-Products can deliver Clamp Connectors (CC) to the established industry standard as referenced by NORSOK NMJ1 and NMJ3. Our Clamp Connectors are interchangeable with the equivalent type of connectors available in the market.

Our expertise in Clamp Connectors comes from 35 years of experience in producing hubs and seal rings and our long experience in designing Clamp Connectors based on modern Design By Analysis methods.



Major Benefits



SMALLER AND LIGHTER

In the oil and gas industry, clamp connectors are often used in flowlines and other high pressure systems and where the compact design and small sealing diameter is of greatest advantage.



EASY, FAST & COST EFFECTIVE

The TPC CC is easy to install. Only 4 bolts and nuts and a clamp assembly. No need to align bolt holes. This makes maintenance and replacement a lot easier, faster and cheaper.



360 DEGREE INSTALLATION

The clamp assembly can be rotated 360° around the hub. This allows to choose the most convenient position for bolt pre-loading.



REUSABLE SEAL RINGS

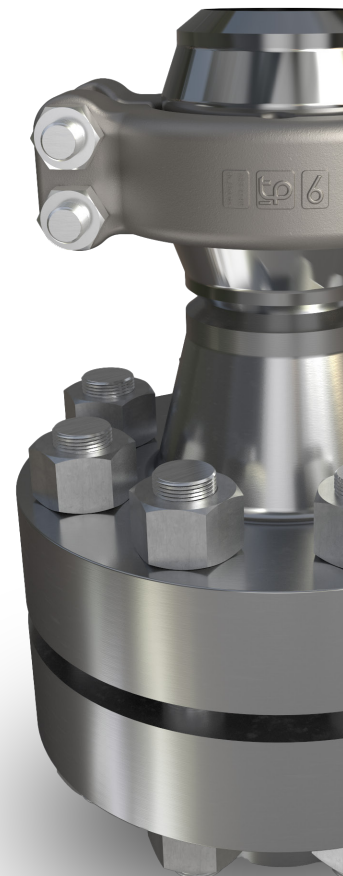
The TPC Clamp Connector makes use of reusable metal sealrings. This allows much more flexibility compared to spiral wound gaskets.

84%
weight saving

10%
smaller OD

58%
smaller length

Comparison between 6" 2500# ASME Weld Neck and TPC Clamp Connector (full set incl. bolting)

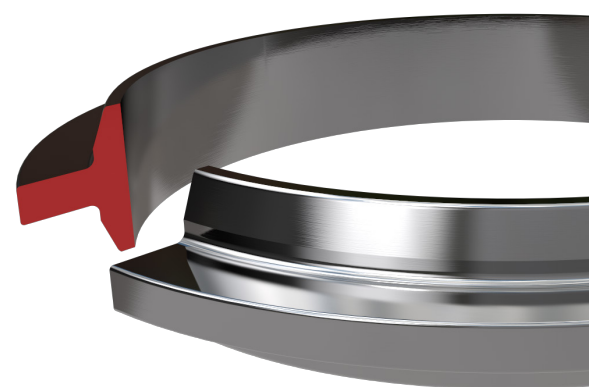


Seal ring types

TP-Products produces high-quality metal seal rings for compact flanges and clamp connectors that feature self-energized pressure-assisted seals. The performance of these rings is dependent on using materials of the highest quality, strength and durability. The deformation-controlled functionality demands that strict dimensional tolerances be met--this is something our machine shop has 35 years' experience of achieving for Clamp Connector seal rings.

Special seal rings such as transition seal rings from one size to another, blind seal rings and seal integrity test rings are available.

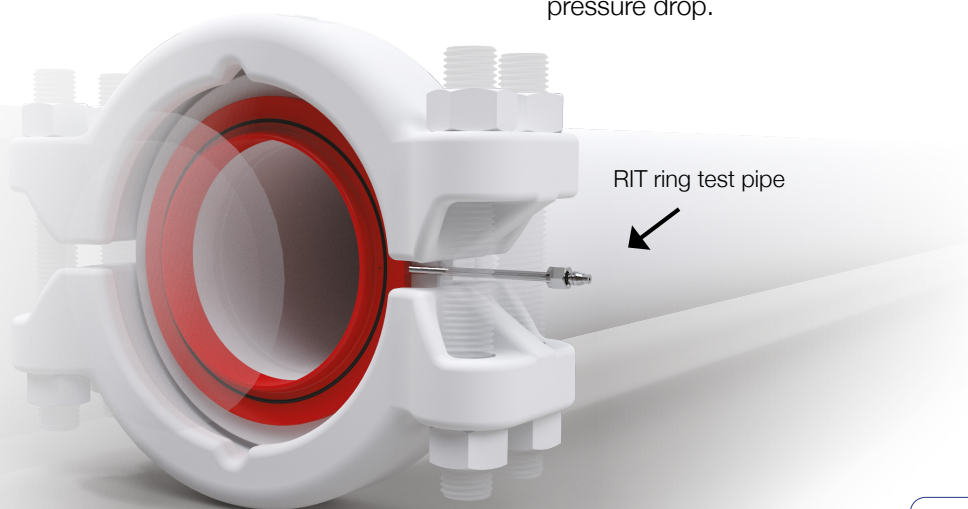
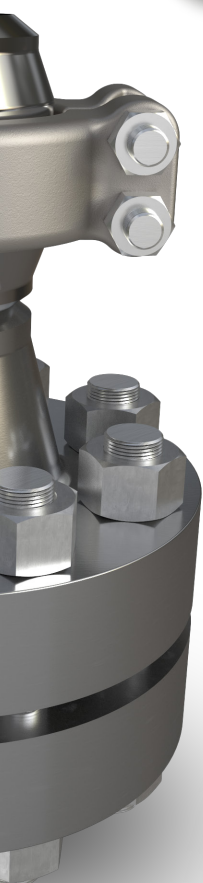
For subsea use, we recommend our silver-coated seals, which provide a robust solution for an extremely good and everlasting sealing performance. For topside applications, we recommend MoS2 dry-film coatings.



Reverse integrity testing

The purpose of the reverse integrity test ring (or a back seal test ring) is to verify that assembly of the TPC Clamp Connector has been successfully performed, and that seal surfaces are good and well sealed, all without having to pressurize the whole piping system that the clamp connectors is a part of.

The pressurized volume is very small which provides a safe test as well as a sensitive test. A small leak is immediately seen as a significant pressure drop.



Scan to learn more about the TP-Clamp Connector



Custom Clamp Connector Designs

TP-Products also offers a wide range of tailor-made clamp connectors for a variety of special applications. These products are suitable for “spec brake” locations and may be used for connections between two pressure classes, or two nominal pipe sizes (enlarging and reducing hubs).

TPC
Slimline
Clamp →



Markets & Applications

Clamp connectors are used in many process piping applications in the oil and gas industry as well as in petrochemical manufacturing. In high-pressure systems, where compact design and small sealing diameters are of greatest advantage, clamp connectors are often utilized.

TP-Products also offers a wide range of tailor-made clamp connectors for a variety of special applications. These products are suitable for “spec brake” locations and may be used for connections between two pressure classes, or two nominal pipe sizes (enlarging and reducing hubs).

We have an experienced engineering team that will assist you in finding the best technical solution for your application. We can provide pricing and delivery information, as well as pressure testing for any pressure components we deliver. We also offer training in assembly of compact flanges and clamp connectors, as well as on-site supervision services.

